



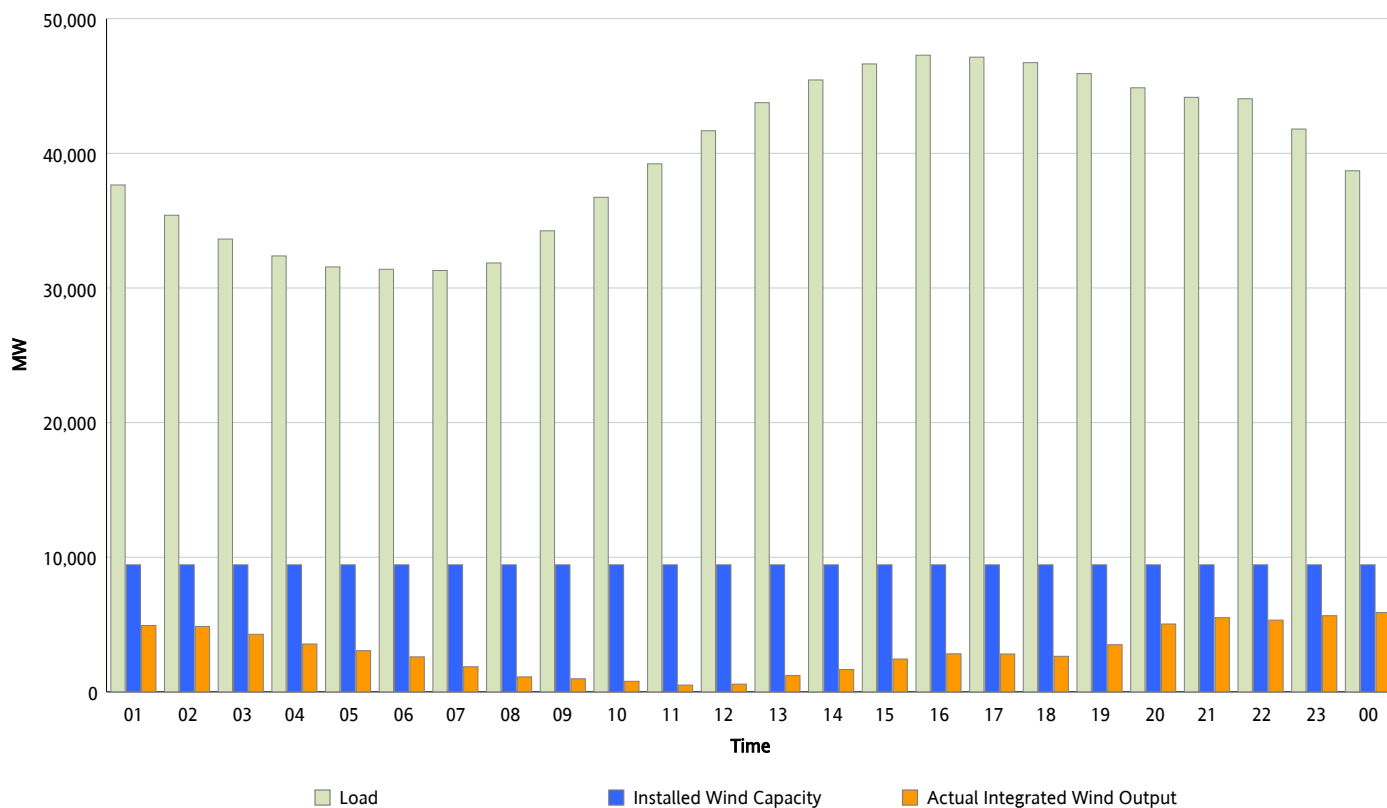
ERCOT Grid Operations

Wind Integration Report : 07/01/2012

| | |
|----------------------|-----------|
| Peak Load | 47,290 MW |
| Load Peak Hour (HE) | 16 |
| Wind Over Peak | 2,826 MW |
| Wind Record 06/19/12 | 8,368 MW |
| Max Wind Value* | 6,199 MW |
| Wind Peak Time | 23:55 |
| Wind Integration % | 16.63 % |

Hourly Average Actual Load vs. Actual Wind Output

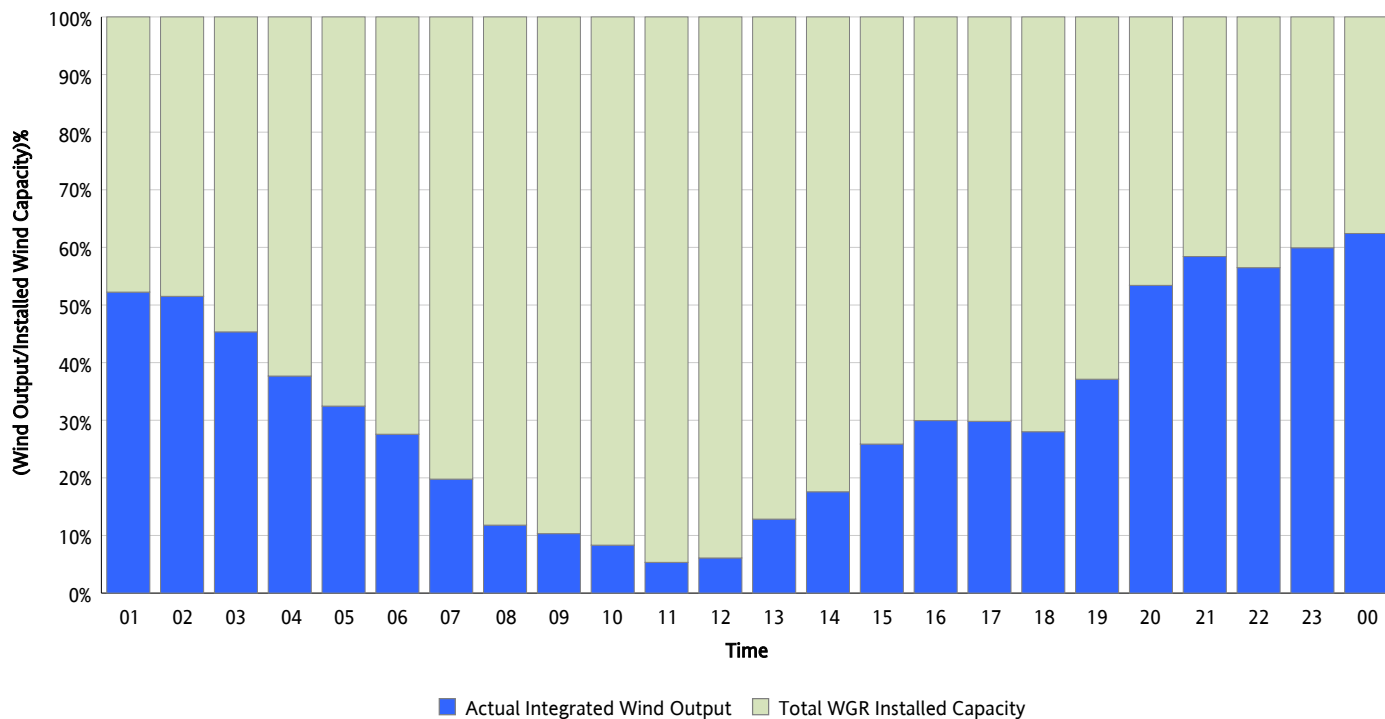
07/01/2012



* Wind Record and Wind Max represent instantaneous values and the rest of the values are integrated over the hour

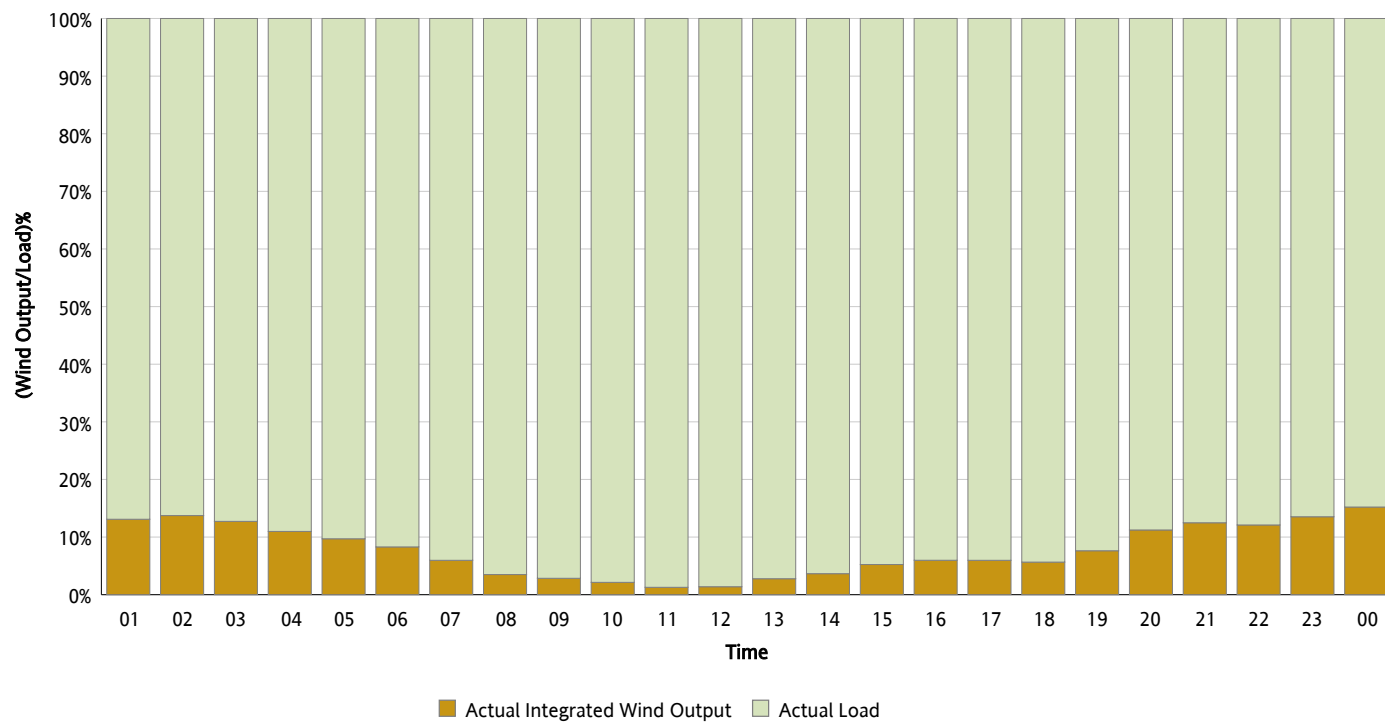
Actual Wind Output as a Percentage of the Total Installed Wind Capacity

07/01/2012



Actual Wind Output as a Percentage of the ERCOT Load

07/01/2012



ERCOT Load vs. Actual Wind Output

06/24/2012 - 07/01/2012

